



GET PEACE OF MIND ABOUT THE HEALTH OF YOUR EYES.

To learn more, visit the National Eye Institute at

<https://nei.nih.gov>

<https://nei.nih.gov/health/maculardegen/>

<https://nei.nih.gov/health/diabetic/>

<https://nei.nih.gov/health/glaucoma/>

Feel free to contact our team if you have any questions.

OCT Retinal Health Check

WHY
HAVE AN
OCT SCAN?

TO RELIABLY
ASSESS THE
HEALTH OF
YOUR EYES

The content and the images of this brochure were created by Carl Zeiss Meditec, Inc. and are protected and owned by the company.

EN_31_027_00071 / US_31_027_00071

Why an OCT scan is so important

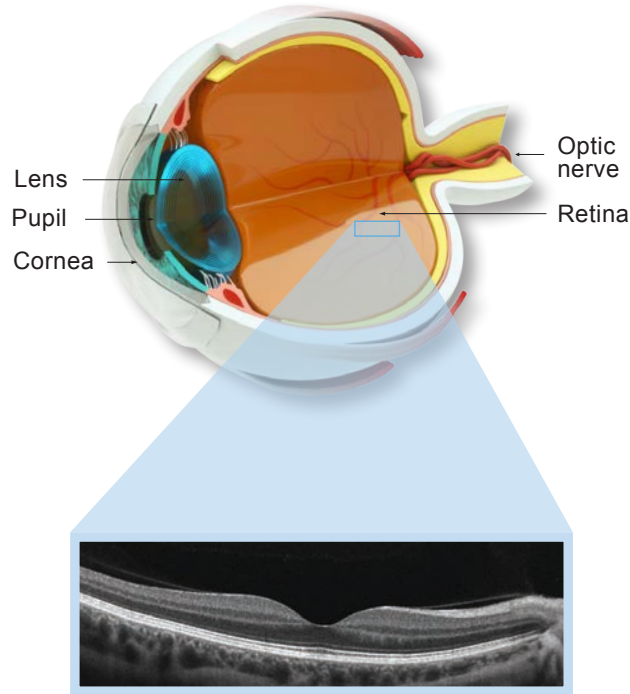
Some of the most harmful eye diseases are also the most difficult to detect, including glaucoma, macular degeneration, and diabetic retinopathy.

Early symptoms of these conditions are not always spotted by conventional eye examinations. To reliably assess the health of your eyes, your eye doctor may recommend a thorough evaluation of the retina once a year using optical coherence tomography (OCT).

An OCT scan produces highly detailed 3D images that help identify warning signs of potential eye diseases early.



A pleasant examination experience



Similar to an ultrasound or MRI examination, an OCT exam is a fast and non-invasive way for your doctor to assess the health of your eyes.

Advanced OCT technology allows your doctor to look below the surface of the retina to detect warning signs before disease affects your vision and determine the best course of care for you.

How damaging eye diseases can impact vision loss



Glaucoma

Often called the “silent thief of sight,” it affects peripheral vision without warning.



Diabetic retinopathy

It is estimated that one-third of adults with diabetes are affected by this disease, which may cause blind spots and/or floaters.



Macular degeneration

A rapidly progressing eye disease that often goes undetected, it is a leading cause of central vision loss in people over 60.